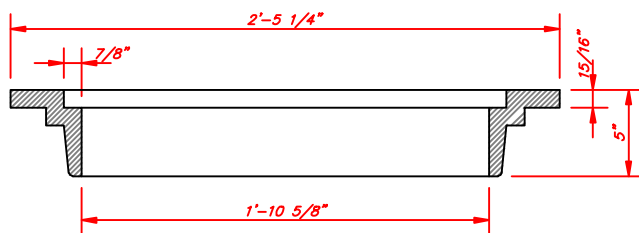
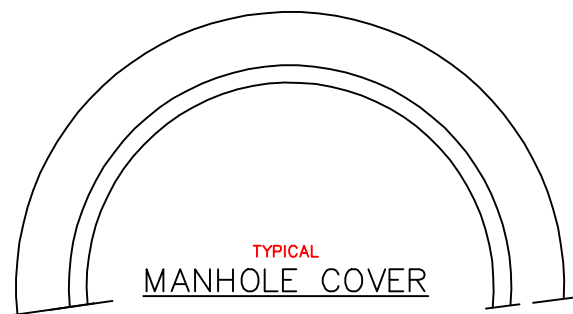
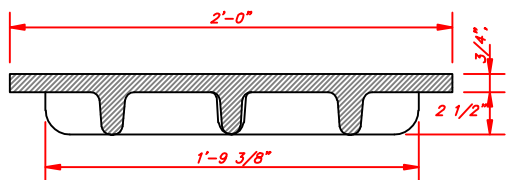
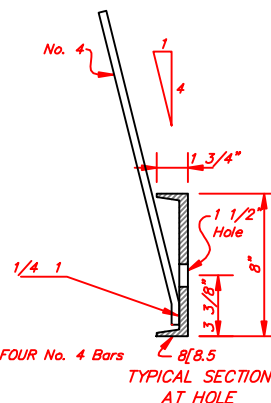
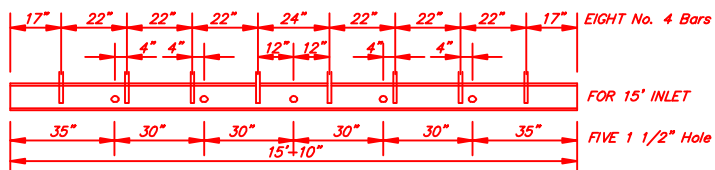
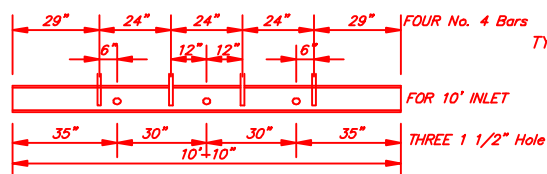
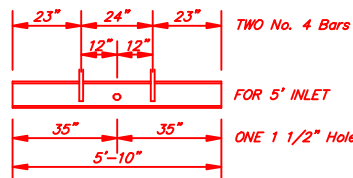


GENERAL NOTES

All concrete shall be Class A.
 Concrete walls shall be formed on both sides and shall be 8" thick.
 Inlet Steps shall be as shown on the applicable Standard.
 Curb Face Assembly shall be galvanized after welding.
 Exposed concrete corners shall be beveled to a 1 1/2" face. Curb and Gutter corners shall be finished to match the existing curb and gutter beyond the Transition Gutter.
 All reinforcing bars shall be tagged with bar designation and station number.
 Reinforcing bars shall be deformed and shall be of intermediate grade steel.
 Dimensions and weights of Typical Manhole Ring and Cover are nominal.
 All bars shall be a minimum 2" clear.
 Since pipe entries into the inlet are variable, the dimensions shown are typical. Actual dimensions and quantities for concrete and reinforcement shall be as required in the work.
 Quantities include volumes occupied by pipes.
 Structural Steel shall be galvanized.



WEIGHT = 260 lbs.



CHANNEL LAYOUT DETAILS



Federal Heights

**CITY OF
 FEDERAL HEIGHTS
 COLORADO
 ENGINEERING DEPT.
 2380 W. 90th Ave.
 303-428-3526**

**STANDARDS DRAWING
 CURB INLET - TYPE R
 COLORADO DEPT. OF HIGHWAYS
 DATE: MARCH 2002**

**DRAWING
 #
 16-4**