

TABLE ONE ~ BAR LIST FOR CURB INLETS, TYPE R

MARK	DIA in.	o.c. Spacing	TYPE	All Inlets		All Inlets				All Inlets			
				L = 5'		10'		15'		10'		15'	
				No. Req'd.	Length	No. Req'd.	Length	No. Req'd.	Length	No. Req'd.	Length	No. Req'd.	Length
401	1/2"	11"	II	15	*	21	*	26	*	11	*	11	*
402		11"	II	7	*	13	*	18	*	7	*	7	*
403		9"	II	*	4'-0"	*	4'-0"	*	4'-0"	*	4'-0"	*	4'-0"
405		6"	VI	11	6'-10"	21	6'-10"	31	6'-10"	11	6'-10"	11	6'-10"
406		6"	VIII	7	8'-10"	7	13'-10"	7	18'-10"	7	8'-10"	7	8'-10"
407		9"	II	*	5'-10"	*	10'-10"	*	15'-10"	*	5'-10"	*	5'-10"
408		12"	II	3	6'-0"	3	11'-0"	3	16'-0"	3	11'-0"	3	16'-0"
409		8"	II	6	5'-10"	6	10'-10"	6	15'-10"	6	10'-10"	6	15'-10"
410		11"	VII							3	*	3	*
411		11"	II							3	5'-2"	3	10'-2"
412		11"	II							3	2'-9"	3	2'-9"
413		9"	II							7	10'-10"	7	15'-10"
501			5 1/2"	IV	11	3'-4"	22	3'-4"	33	3'-4"	22	3'-4"	33
502	5/8"	5 1/2"	III						11	11'-5"	22	11'-5"	
503		5 1/2"	II	5	3'-6"	16	3'-6"	27	3'-6"	6	3'-6"	6	3'-6"
601	3/4"	2 1/2"	V	2	8'-10"	2	8'-10"	2	8'-10"	2	8'-10"	2	8'-10"
Ø8/8.5				1	5'-10"	1	10'-10"	1	15'-10"	1	10'-10"	1	15'-10"
				2 Bars, 1 Rod	4 Bars, 3 Rods				8 Bars, 5 Rods				

* Variable, refer to Table TWO

Ø Include 18" No. 4 Bars (See Channel Layout Detail)
See Curb Face Assembly and Channel Layout Details

REGULAR
INLETS

DROP BOX
INLETS

TABLE TWO ~ BARS AND QUANTITIES VARIABLE WITH H

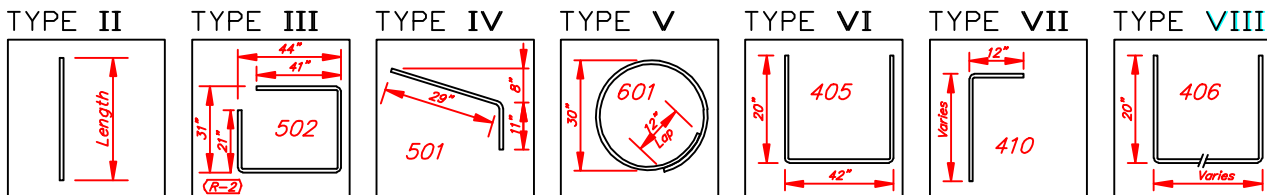
H	Length			No. Req'd. Regular		No. Req'd. Drop Box		L = 5'		L = 10'		L = 15'	
	401	402	410	403	407	403	407	Cu. Yd. Conc.	Lb. Steel	Cu. Yd. Conc.	Lb. Steel	Cu. Yd. Conc.	Lb. Steel
	3'-0"	2'-8"	1'-8"		10	7			3.2	285	5.3	497	7.4
3'-6"	3'-2"	2'-2"		10	7			3.4	305	5.7	528	7.9	474
4'-0"	3'-8"	2'-8"		12	9			3.7	326	6.0	559	8.4	786
4'-6"	4'-2"	3'-2"		12	9			3.9	334	6.4	571	8.8	803
5'-0"	4'-8"	3'-8"		14	11			4.1	354	6.7	602	9.3	844
5'-6"	5'-2"	4'-2"	3'-5"	16	13	15	6	4.4	375	6.0	607	7.5	840
6'-0"	5'-8"	4'-8"	3'-11"	16	13	16	6	4.6	382	6.2	616	7.7	850
6'-6"	6'-2"	5'-2"	4'-5"	18	15	18	8	4.8	402	6.4	637	7.9	870
7'-0"	6'-8"	5'-8"	4'-11"	20	17	19	10	5.0	423	6.6	654	8.1	887
7'-6"	7'-2"	6'-2"	5'-5"	20	17	20	10	5.3	430	6.9	664	8.4	897
8'-0"	7'-8"	6'-8"	5'-11"	22	19	22	12	5.5	451	7.1	684	8.6	917
8'-6"	8'-2"	7'-2"	6'-5"	24	21	23	14	5.7	471	7.3	702	8.8	934
9'-0"	8'-8"	7'-8"	6'-11"	24	21	24	14	6.0	479	7.6	711	9.1	944
9'-6"	9'-2"	8'-2"	7'-5"	26	23	26	16	6.2	499	7.8	732	9.3	964
10'-0"	9'-8"	8'-8"	7'-11"	28	25	27	18	6.4	520	8.0	749	9.5	982
10'-6"	10'-2"	9'-2"	8'-5"	28	25	28	18	6.7	527	8.3	759	9.8	991
11'-0"	10'-8"	9'-8"	8'-11"	30	27	30	20	6.9	547	8.5	779	10.0	1012

NOTE: For L=5', L=10' and L=15' REGULAR

INLETS: Total quantities needed are OUTSIDE of the heavy black line.

DROP BOX INLETS: Total quantities needed are INSIDE of the heavy black line.

STEEL WEIGHTS DO NOT INCLUDE STRUCTURAL STEEL.



BAR BENDING DIAGRAMS ~ (Dimensions are Out-to-Out of Bar)



**CITY OF
FEDERAL HEIGHTS
COLORADO
ENGINEERING DEPT.
2380 W. 90th Ave.
303-428-3526**

STANDARDS DRAWING
CURB INLET - TYPE R
COLORADO DEPT. OF HIGHWAYS
DATE: MARCH 2002

**DRAWING

16-3**